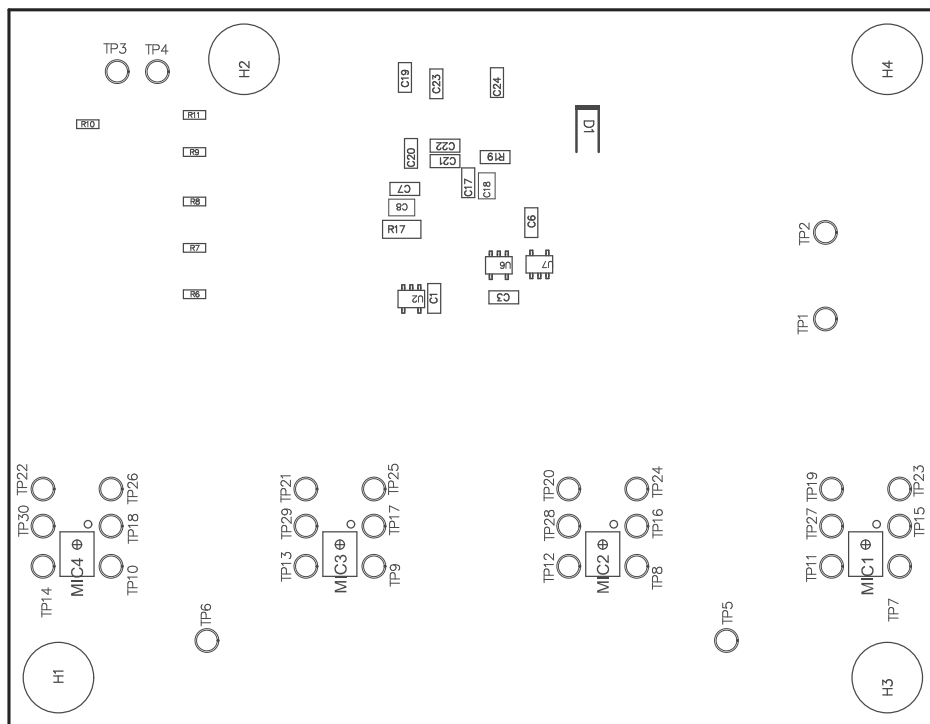


ZZ1 ■ These assemblies are ESD sensitive, ESD precautions shall be observed.

Z22 ■ These assemblies must be clean and free from flux and all contaminants. Use of no clean flux is not acceptable.

Z23 ■ These assemblies must comply with workmanship standards IPC-A-610 Class 2, unless otherwise specified.



PCB VIEWED FROM TOP SIDE	BOARD #: TIDA-01470	REV: A	SVN REV: Not In VersionControl
PLOT NAME = Top Assembly Drawing	GENERATED : 5/12/2017 10:52:07 AM		TEXAS INSTRUMENTS

